

CONNECTOR RAST 1.5

Series: S-TECX 1.5



S-TECX 1.5



housing MF 7134-006



housing MF 7134-006

CONNECTORSYSTEM RAST 1.5

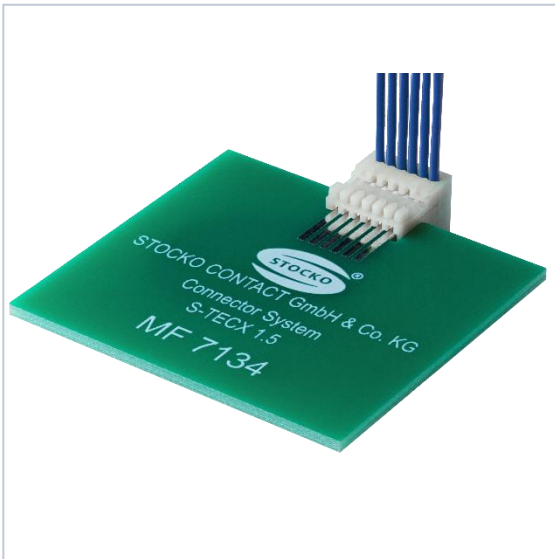
The new connector system in 1.5 mm pitch enables space-saving contacting of electronics in the household appliance or electronics industry. Applications include control electronics in washing machines and dishwashers.

The double-row coding allows a wide range of coding variants, even with small numbers of poles.

The classic double insulation displacement terminals for contacting wires with a cross-section of 0.13 mm² and 0.22 mm² guarantee an electrically and mechanically stable connection between wire and contact. The wire's are contacted in a simple way by closing the pre-assembled cover.

Concealment safety through polarising elements and Koshiri safety ensure the quality of the connection in handling and application. To avoid mismatching, numerous coding variants can be created with the double-row coding.

S-TECX 1.5



FEATURES

General information

Connector system S-TECX 1.5 acc. RAST 1.5

- Pitch 1.5 mm
- Compact design
- Easy and parallel contacting of all inserted wires due to pre-assembled cover
- KOSHIRI safety
- Polarization and coding options
- Designed for FR4 PCB's
- 48 V rated voltage
- 2 A rated current
- Continuous operating temperature up to 130 °C *)
- GWT 750 °C according to IEC 60335-1
- Compliance with the list of prohibited substances according to REACH

Connectors

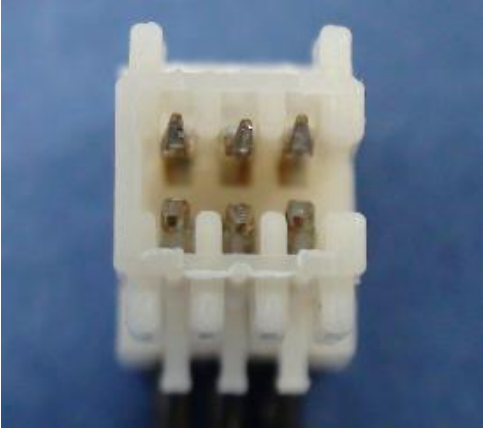
- Double insulation displacement terminal for high contact safety
- Fork spring contact
- Single wires
- Wire cross-section 0.13 - 0.22 mm²
- 90° cable outlet
- Color of housing is natural
- Packaging in tube
- Automated further processing on semi- and full automatic machines



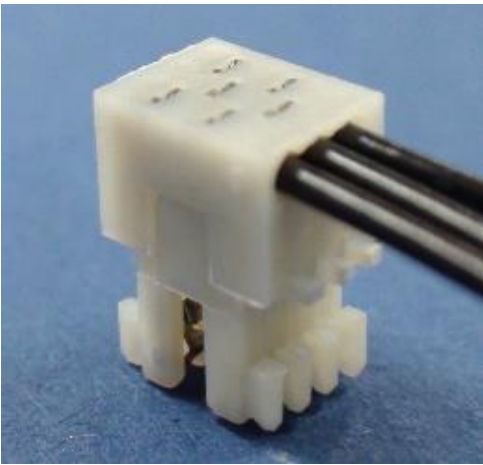
housing MF 7134-006

*) The following applies: Upper limit temperature (contact carrier) RTI (electrical) of the UL Yellow Card.

S-TECX 1.5



housing MF 7134-003



housing MF 7134-003

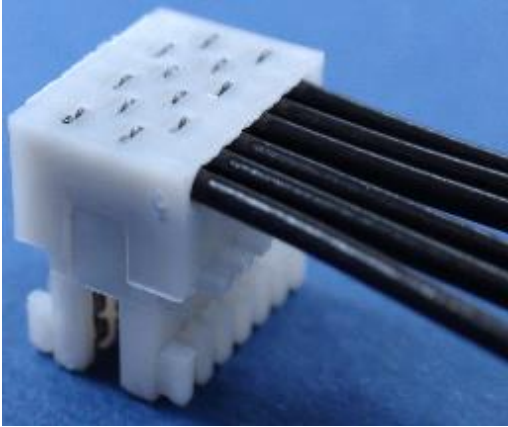
TECHNICAL DATA

Mechanical

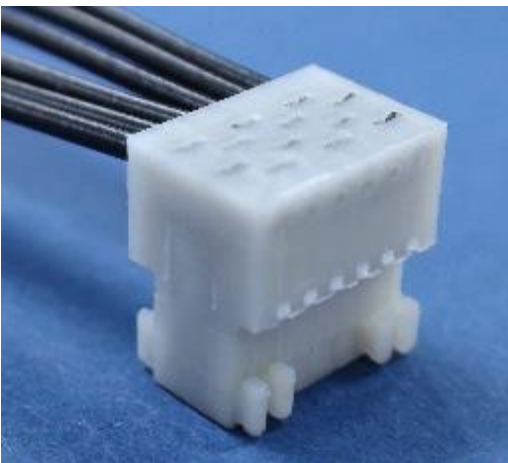
Pitch	1.5 mm
Positions	2 to 12
Housing	dimension E
2-pole	4.4 mm
3-pole	5.9 mm
4-pole	7.4 mm
5-pole	8.9 mm
6-pole	10.4 mm
7-pole	11.9 mm
8-pole	13.4 mm
9-pole	14.9 mm
10-pole	16.4 mm
11-pole	17.9 mm
12-pole	19.4 mm
Termination	IDC
Cable type	Single cable
Cable outlet	90°
Wire size	0.13 - 0.22 mm ²
Insulation Ø	≤ 1.2 mm
Hardness of insulation	94 A ± 3
Type of wire	Stranded
Temperature range	- 40 °C ...+ 130 °C *)
Board thickness	1.5 mm ± 0.14 mm
PCB Type	FR4
Operating cycles	5

*) The following applies: Upper limit temperature (contact carrier) RTI (electrical) of the UL Yellow Card.

S-TECX 1.5



Federgehäuse MF 7134-006



Federgehäuse MF 7134-006

TECHNICAL DATA

Elektrisch

Rated current acc. to DIN EN 60352-4	2 A, T 107°C
Rated voltage	48 V (IEC 60664 / pollution degree 2)
Air gap and creeping distances	≥ 0,6 mm
Tracking resistance	CTI ≥ 600 V

Materials

Housing	PA V0 glow wire resistant, GWT 750°C acc. to IEC 60335-1, halogen-free *
Colour of housing	natural
Contact	CuSn
Contact surface	Sn

Approvals

VDE	DIN EN 61984
UL / ULC	in preparation
4.000 h acc. To RAST-Spezifikation	in preparation
Further approvals	on request

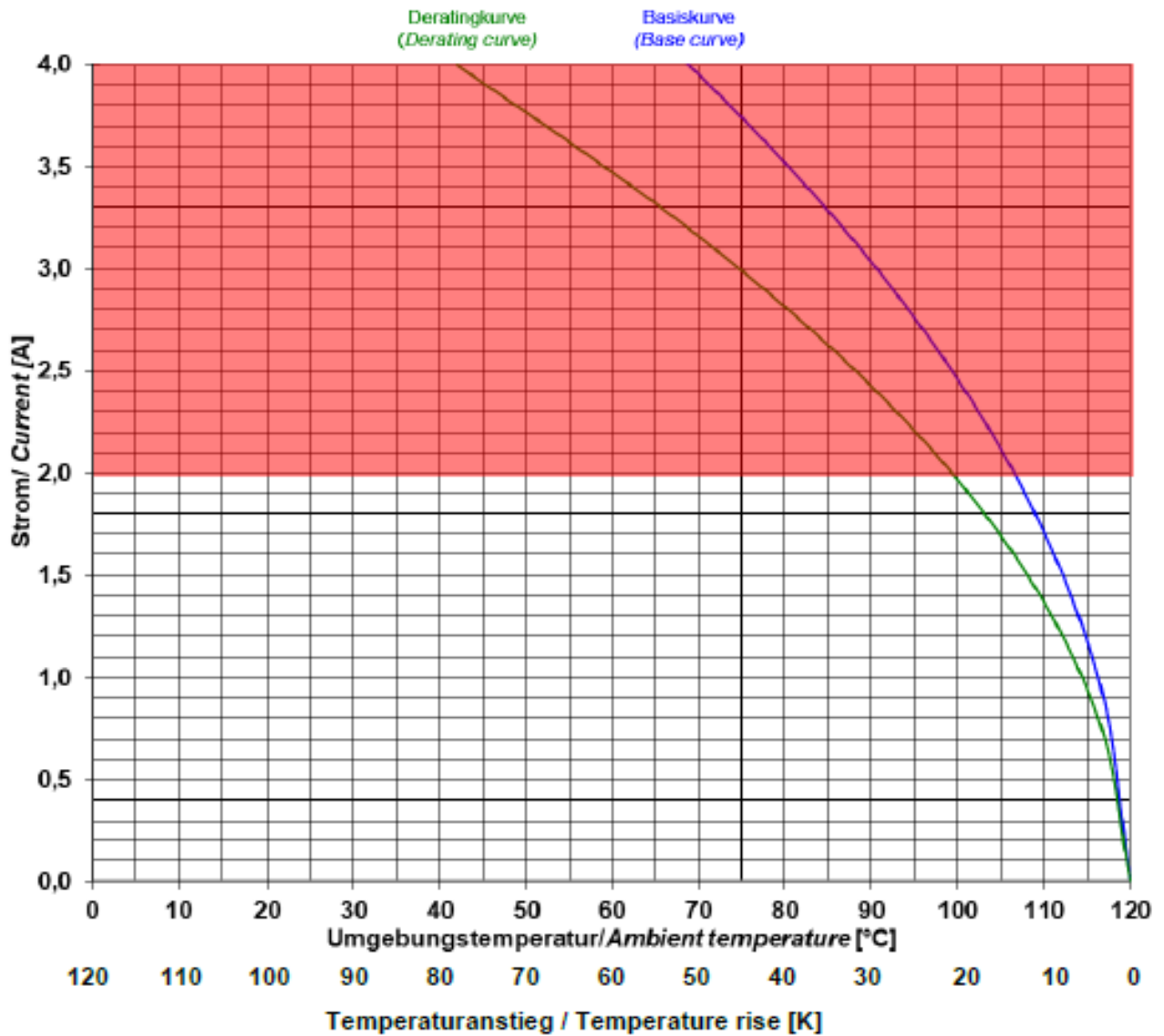
* Halogen free, follows the standards that Br is less than 900ppm, Cl is less than 900ppm, and total of halogen amount (Br and Cl) is less than 1500ppm.)

S-TECX 1.5

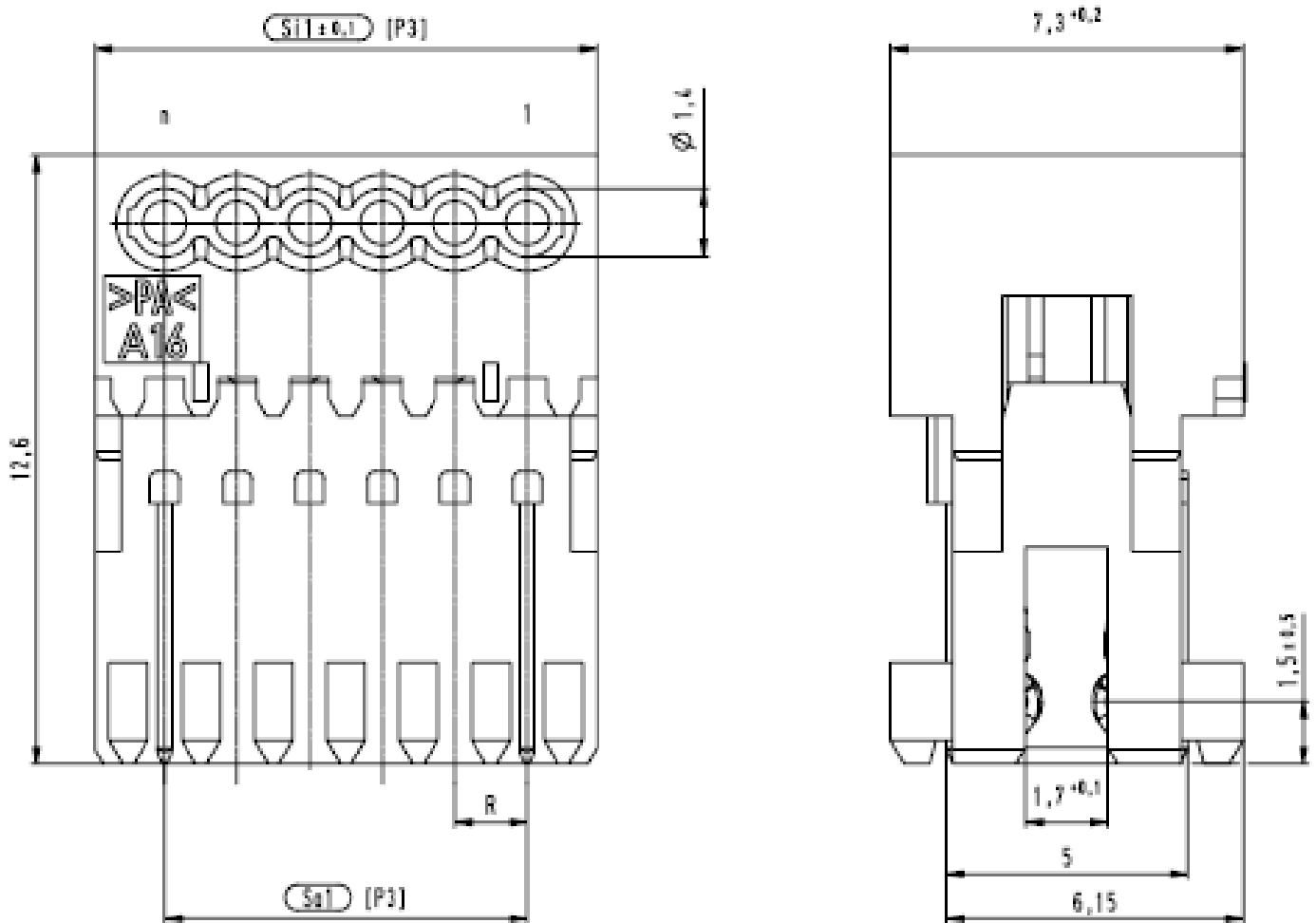
DERATING CURVE

Current heating with housing / Derating with housing

Stecker/ Connector	: 4x MFVV 7134-012	Polzahl/ Poles	: 4x 12
Gehäusewerkstoff/ Housing material	: N620 (PA66/6T-GF30)		
Kontaktwerkstoff/ Contact material	: CuSn6	Oberfläche/ Surface	: Sn
Gegenstecker/ Counter part	: PCB 1,55 mm		
Kontaktwerkstoff/ Contact material	: Cu/ Sn double side laminated	Oberfläche/ Surface	: HAL Sn
Leiteraufbau/ Wire composition	: 7 x 0,156 mm (0,13mm ²)	Zuleitung/ Lead	: 150 mm
Thermoelement/ Thermocouple	: Fe-CuNi 2*0.2 mm Ø	(Type J)	
Messpunkt/ Measure's point	: Centre contacts, TC glued on IDC blade		



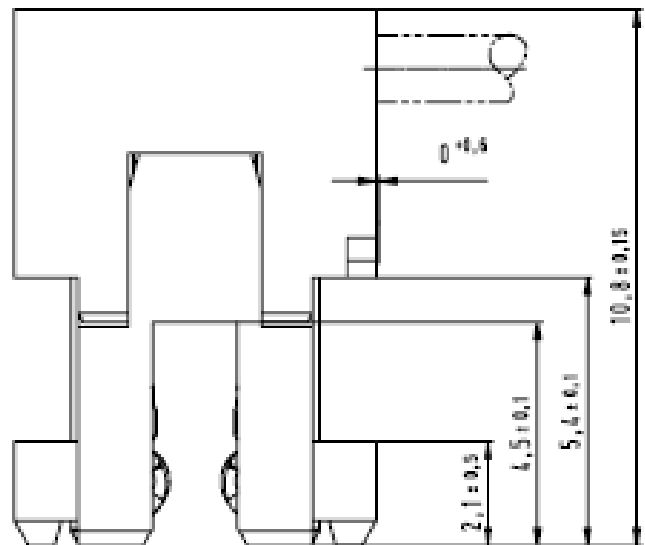
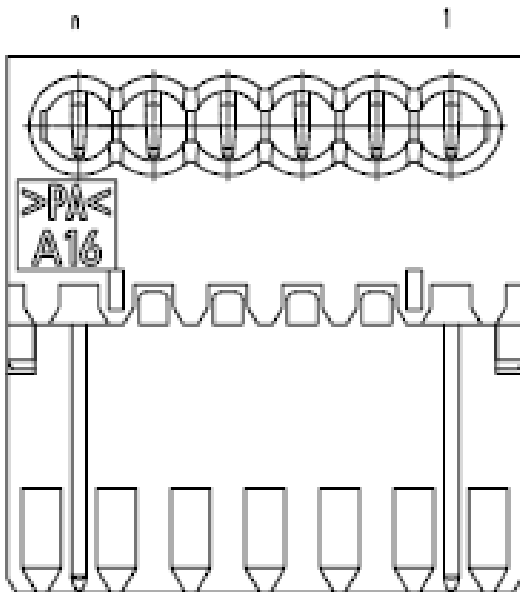
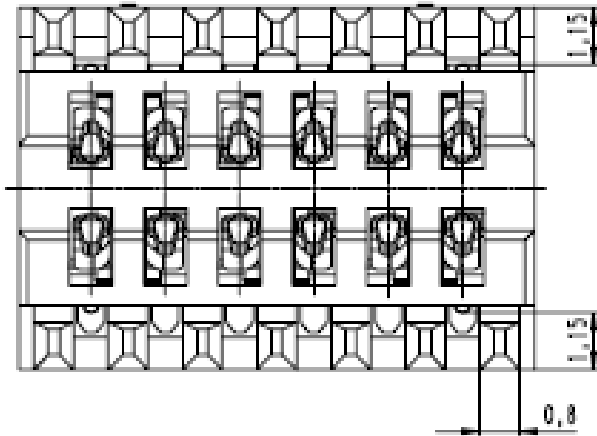
MF 7134-003 in pre-locking position



$$S_{i1} = [(n-1) \times 1,5 + 2,9] \pm 0,1$$

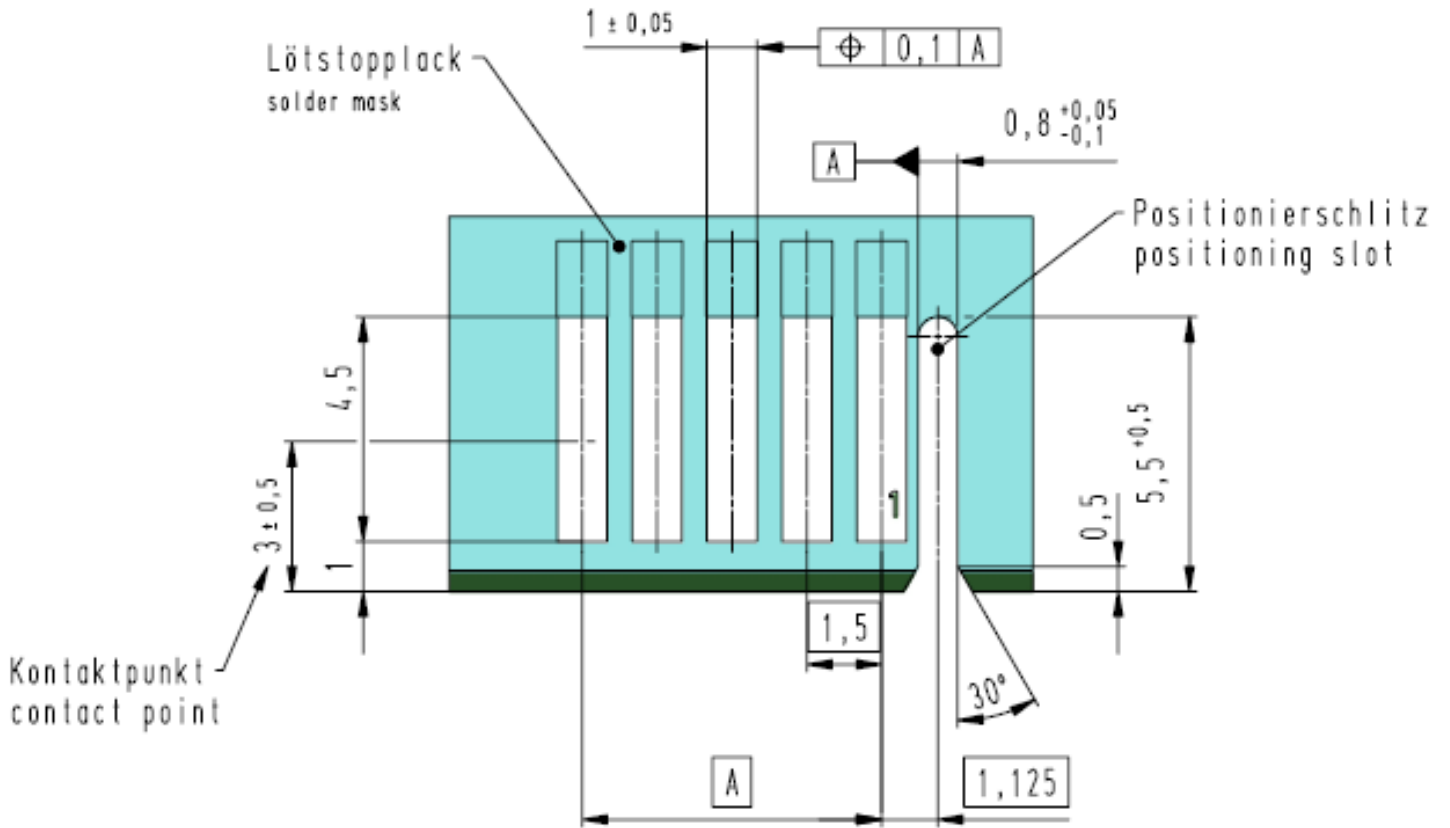
$$S_{a1} = (n-1) \times 1,5 \pm 0,1$$

Dimension MF 7134-006
Final assembled

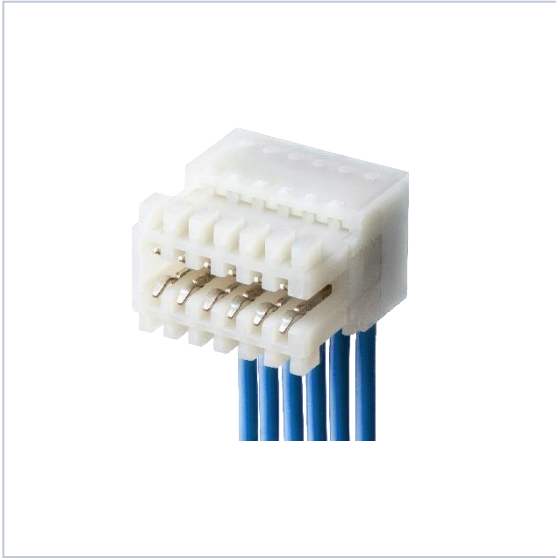


S-TECX 1.5

PCB-Layout



Polzahl number of poles	A
2	1,5
3	3
4	4,5
5	6
6	7,5
7	9
8	10,5
9	12
10	13,5
11	15
12	16,5



STOCKO CONTACT

GmbH & Co. KG

Simonshöfchen 31
D-42327 Wuppertal

Phone +49 202 9733 - 0
Fax +49 202 9733 - 411

E- Mail info@stocko-contact.com
Internet www.stocko-contact.com

Ein Unternehmen der Wieland Gruppe
A Member of the Wieland Group